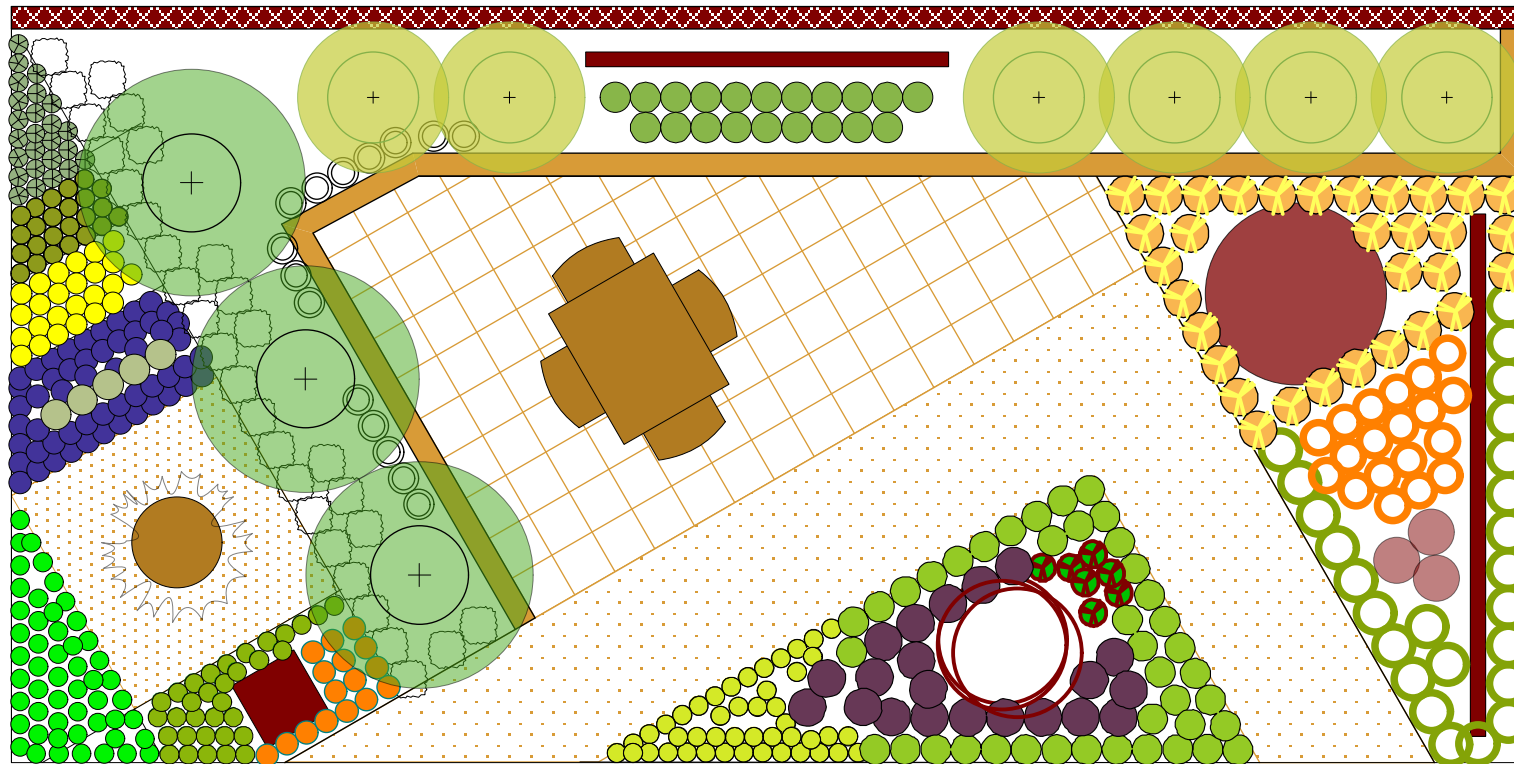


GARDEN WEEK APRIL 2010 - WALDA DISPLAY GARDENS - DESIGN FOR SUSTAINABLE OASIS  
 LIFESPACE landscape design - JENNY THOMAS  
 Scale 1:50@ A3

kitchen garden

- 150mm nandina x 35
- advanced  
Pyrus calleryana 'Winter Glow' x 3  
200L (700mm H x 650mmW)
- 125mm sage x 23
- 125mm rainbow chard x 24
- 125mm chillies x 25
- 125mm purple basil x 52
- 200mm eggplant x 5
- 75L (500mm W x 500mmH)  
advanced lemon x 1  
in  
600mm diameter x 600mmH pot
- 125mm parsley x 54
- 125mm rosemary x 33
- 125mm Tagetes erecta x 16
- corten box

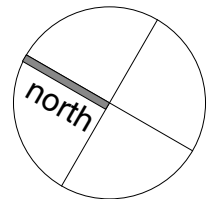


natives / habitat garden

- 175mm Dianella 'Goddess' x 14
- 175mm A. flavidus x 20
- Melaleuca leucadendra x 6  
150L (600mmW x 650mmH)
- 200mm Bush Blitz paws x 32
- corten water bowl x 1  
diameter 1200m  
& floating water plants x 3
- 305mm After dark x 3
- 140mm bush blitz x 20
- 175mm Acacia cognata 'Limelight' x 25
- gum flower corten screens

grass & succulent garden

- sculpture
- 200mm phormium 'Purple Haze' x 21
- 175mm aeonium x 8
- 125mm gold sedum x 50
- 150mm lomandra 'Lime Wave' x 41



LIFESPACE



landscape  
design

JENNY THOMAS  
landscape designer

M: 0407 197 006  
E: info@lifespacedesign.com.au  
W: www.lifespacedesign.com.au

COPYRIGHT  
LIFESPACE landscape design  
2010